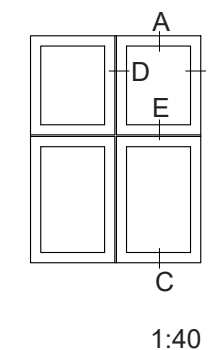
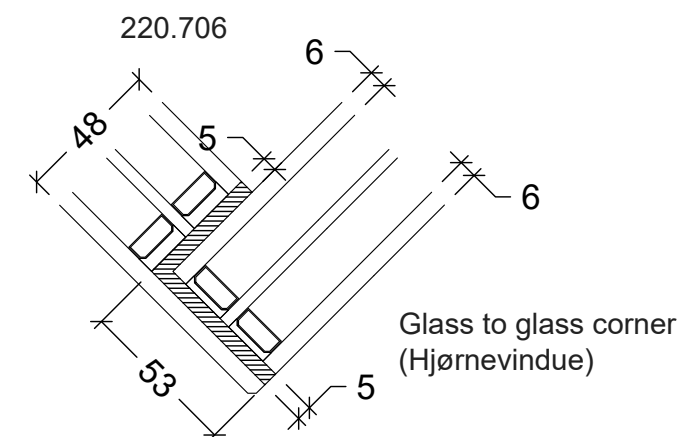
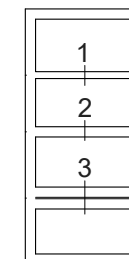
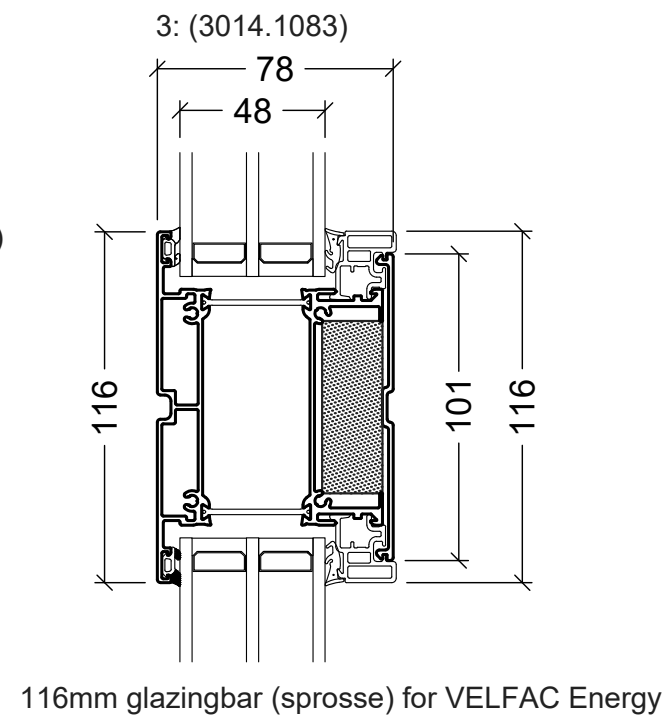
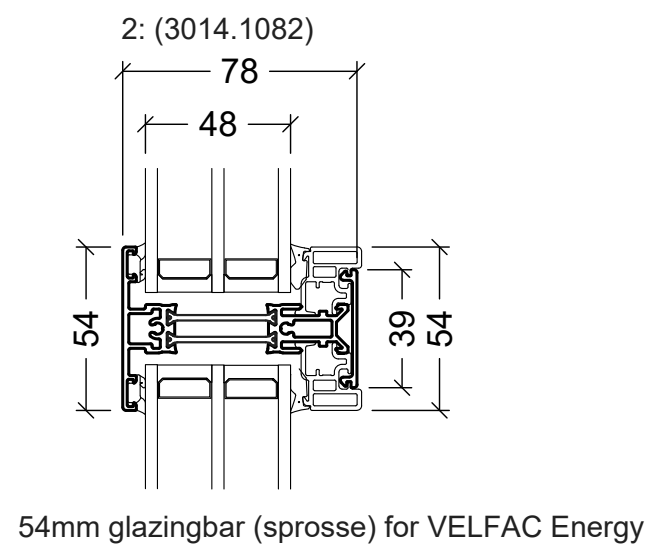
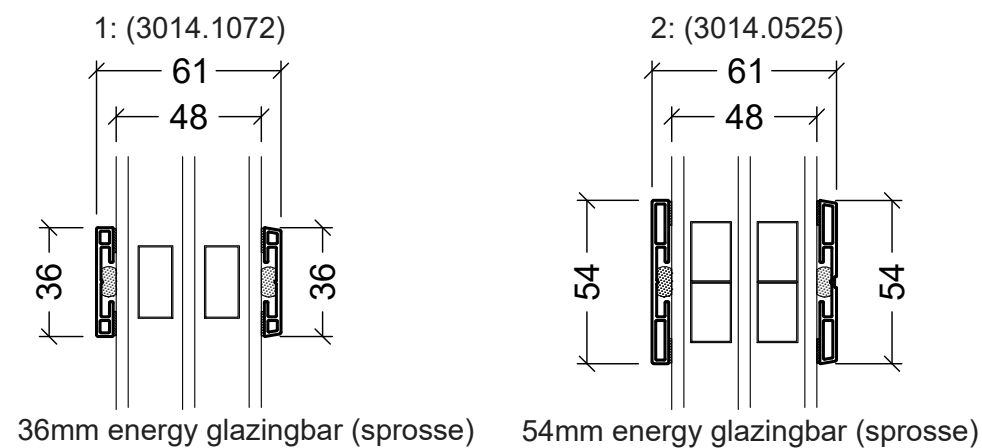


Note:  
90mm mullion only available as fixed  
90mm lodpost findes kun som fast post.




<b>VELFAC®</b> VELFAC is a trademark of DOVISTA A/S	System: VELFAC 200 Energy	Scale: 1:2,5 / 1:40
	English: Standard details	Edition No. 09
	Dansk: Standard snit	01.21 © 2013, 2021

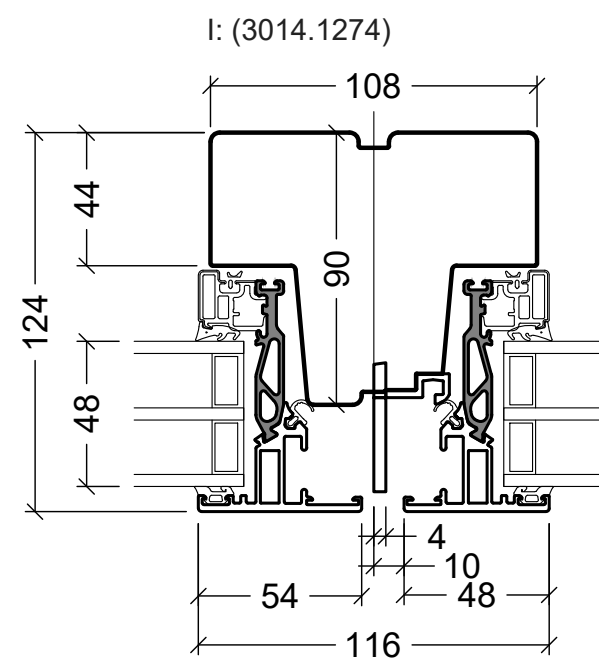
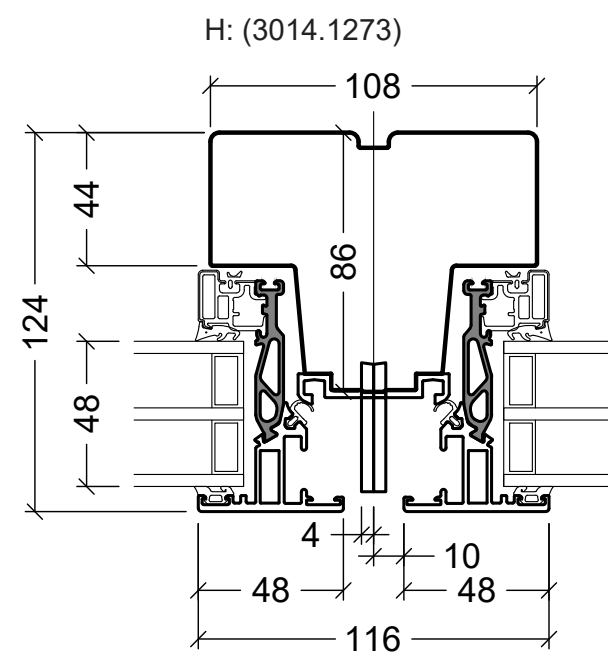
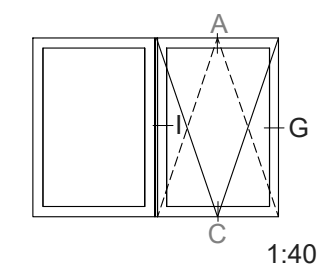
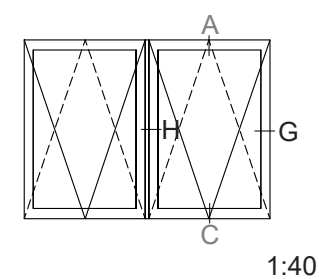
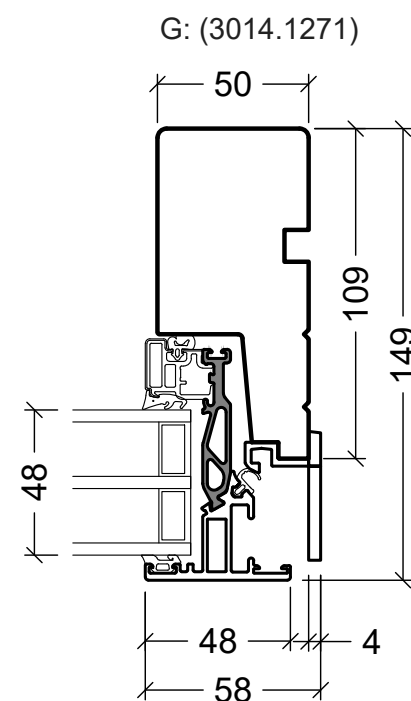
© DOVISTA A/S, CVR-no. 21147583. All intellectual property rights, copyright as well as all rights in know-how vest in DOVISTA A/S. This drawing may not be reproduced, stored, or transmitted in any form by any means (electronic, mechanical, photocopying, recording or otherwise) without the prior written consent of DOVISTA A/S. This drawing is to be used only for the purposes specified by DOVISTA A/S and for no other purpose. We reserve all rights to change the product and product range without notice.



1:40

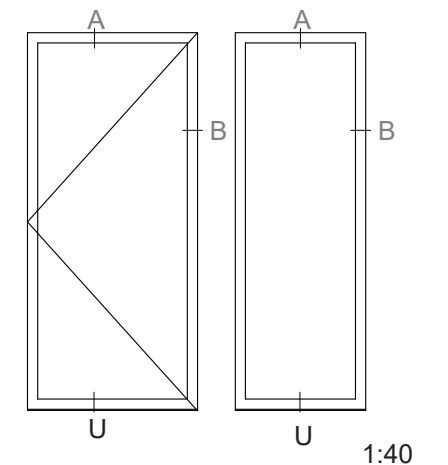
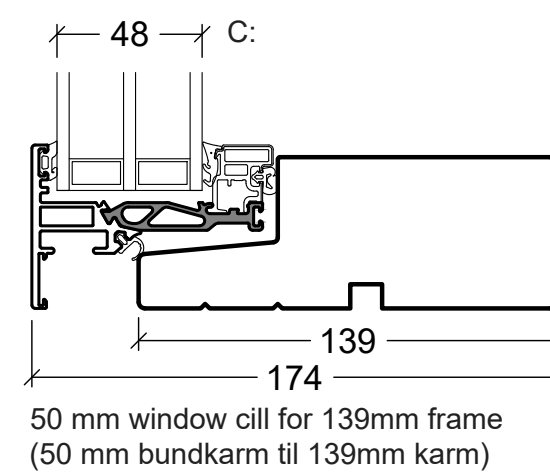
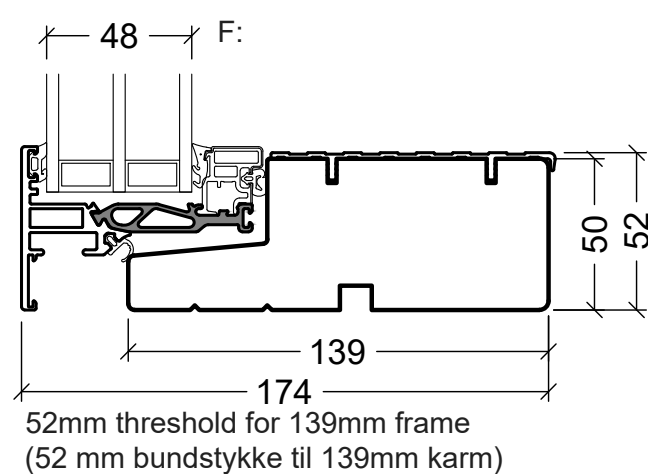
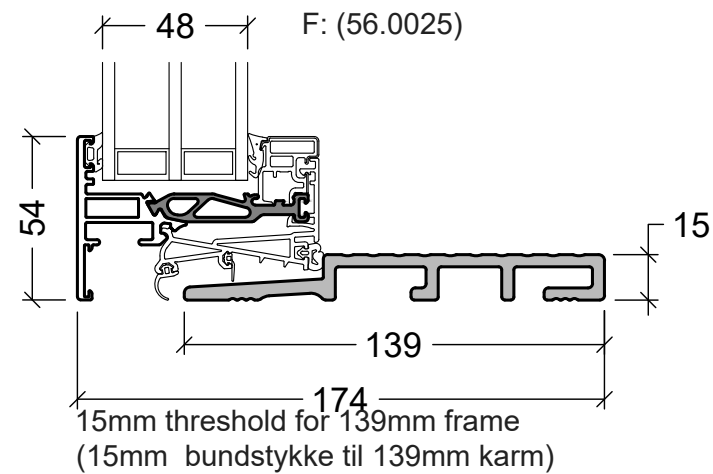
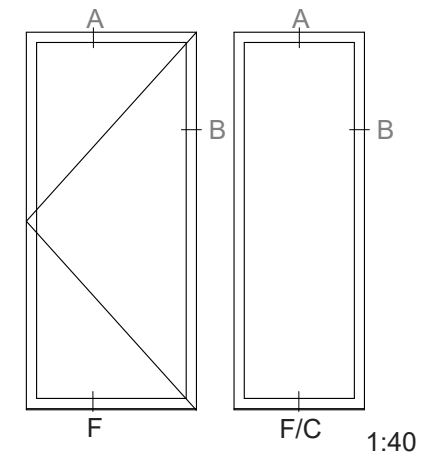
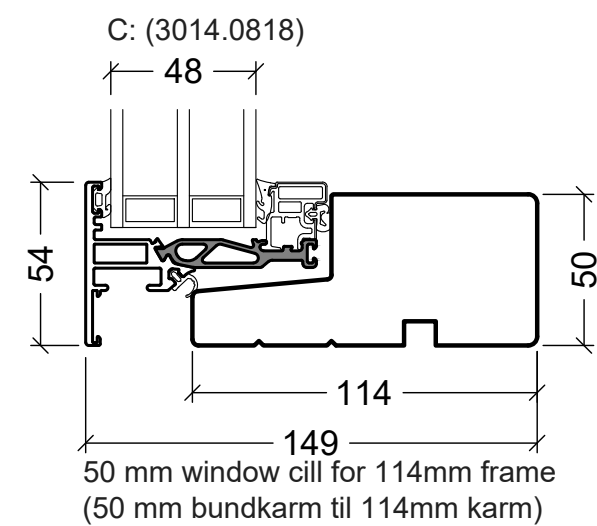
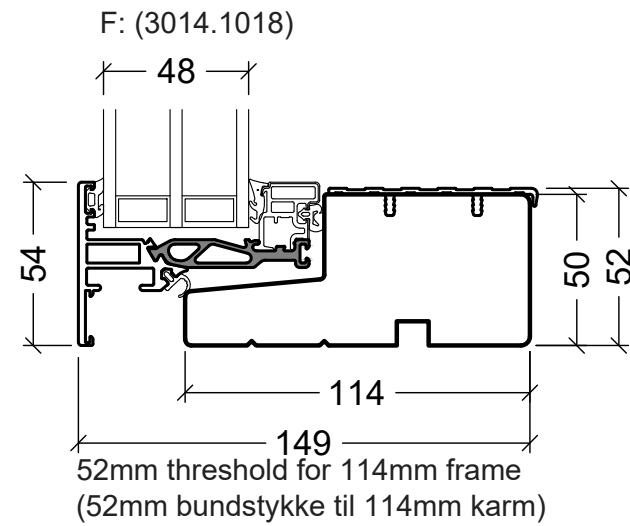
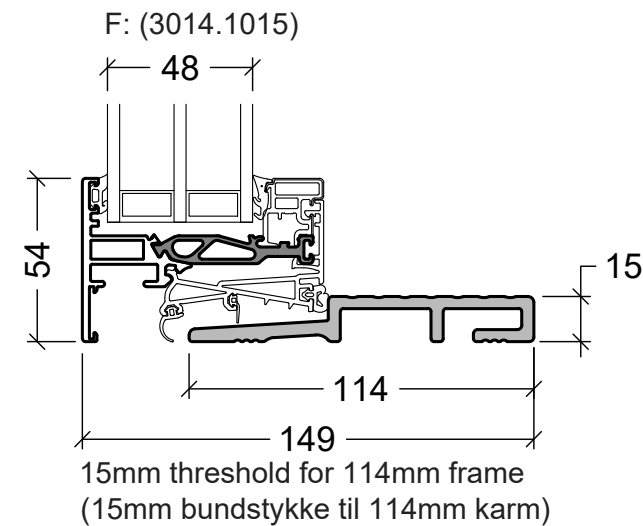
	System: VELFAC 200 Energy	Scale: 1:2,5 / 1:40
	English: Glazing bars	Edition No. 09
VELFAC is a trademark of DOVISTA A/S	Dansk: Sprosser	01.21 © 2013, 2021

© DOVISTA A/S, CVR-no. 21147583. All intellectual property rights, copyright as well as all rights in know-how vest in DOVISTA A/S.  
This drawing may not be reproduced, stored, or transmitted in any form by any means (electronic, mechanical, photocopying, recording or otherwise) without the prior written consent of DOVISTA A/S. This drawing is to be used only for the purposes specified by DOVISTA A/S and for no other purpose.  
We reserve all rights to change the product and product range without notice.

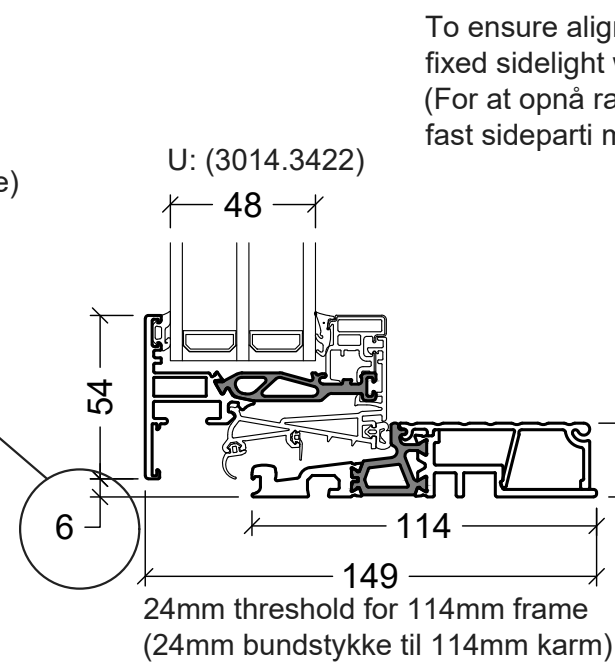


Ⓐ Ⓒ = as standard V200 Energy, see "Standard Details"

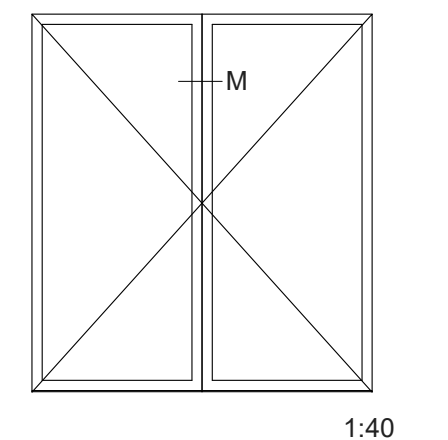
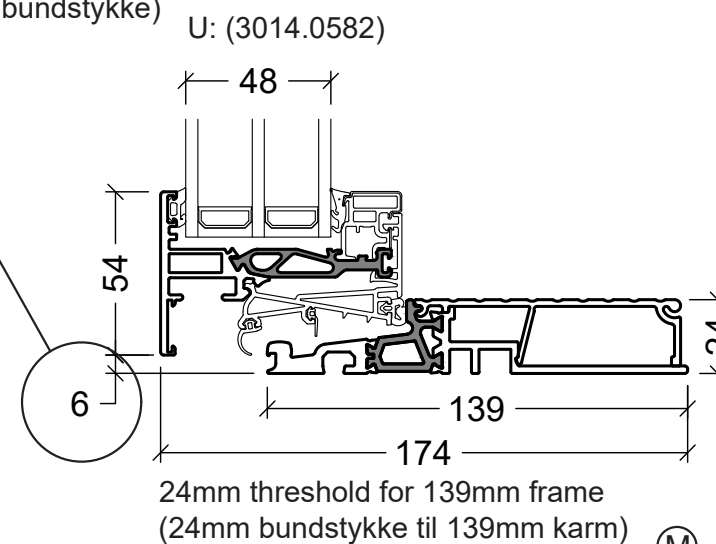
<b>VELFAC®</b> VELFAC is a trademark of DOVISTA A/S	System: VELFAC 200 Energy	Scale: 1:2,5 / 1:40
	English: Reversible window	Edition No. 09
	Dansk: Vendevindue	01.21 © 2013, 2021
© DOVISTA A/S, CVR-no. 21147583. All intellectual property rights, copyright as well as all rights in know-how vest in DOVISTA A/S. This drawing may not be reproduced, stored, or transmitted in any form by any means (electronic, mechanical, photocopying, recording or otherwise) without the prior written consent of DOVISTA A/S. This drawing is to be used only for the purposes specified by DOVISTA A/S and for no other purpose. We reserve all rights to change the product and product range without notice.		



To ensure alignment:  
fixed sidelight with 24mm threshold.  
(For at opnå rammeflugt:  
fast sideparti med 24mm bundstykke)



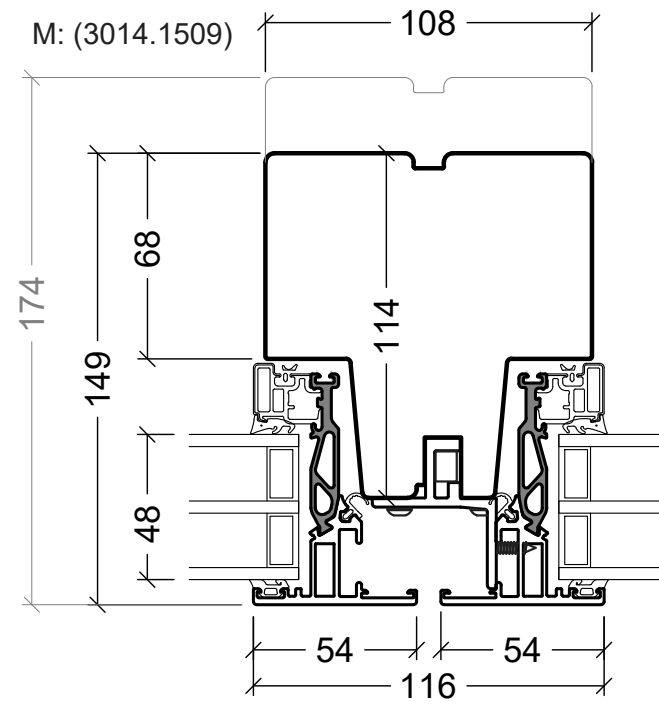
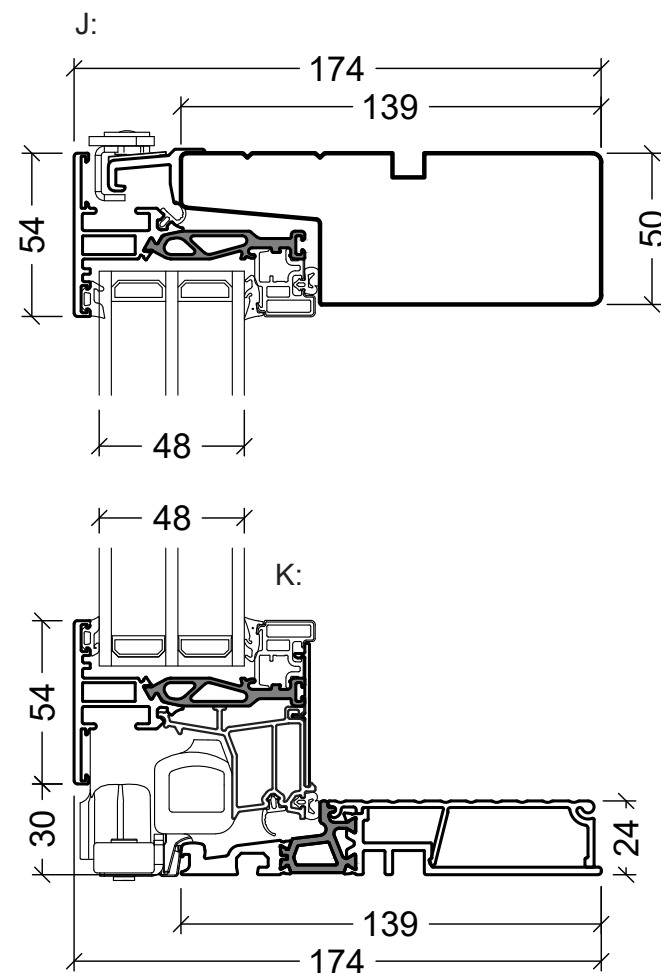
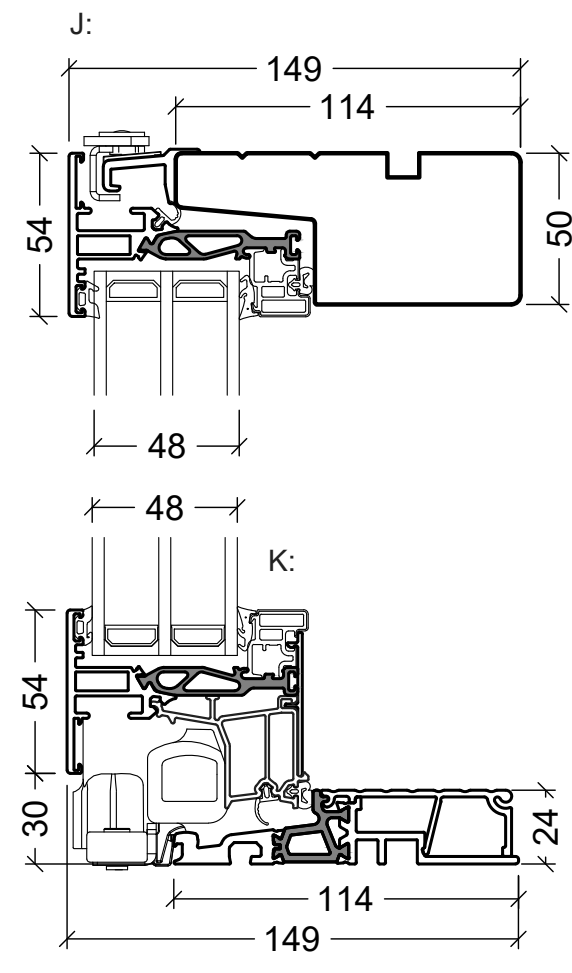
To ensure alignment:  
fixed sidelight with 24mm threshold.  
(For at opnå rammeflugt:  
fast sideparti med 24mm bundstykke)



(M) = see sliding casement door with 24mm threshold  
(A) (B) = as standard V200 Energy, see "Standard Details"

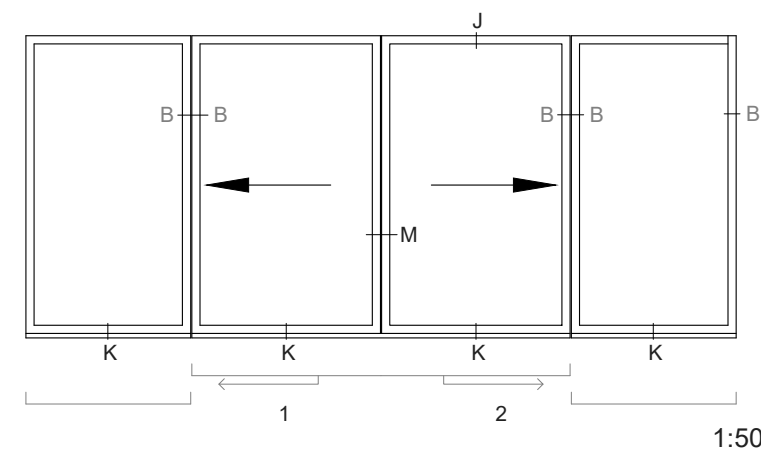
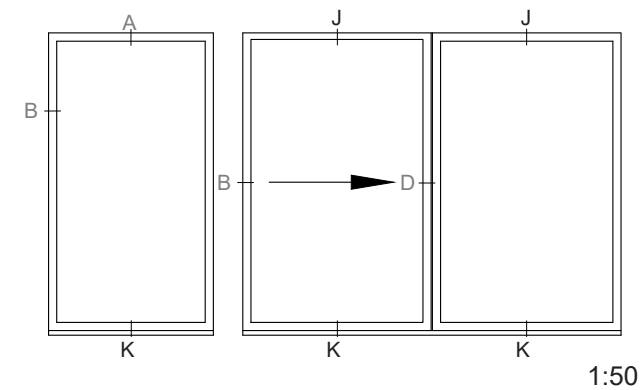
<b>VELFAC®</b> <small>VELFAC is a trademark of DOVISTA A/S</small>	System: VELFAC 200 Energy	Scale: 1:2,5 / 1:40
	English: Casement door	Edition No. 09
	Dansk: Terrassedør	01.21 © 2013, 2021

© DOVISTA A/S, CVR-no. 21147583. All intellectual property rights, copyright as well as all rights in know-how vest in DOVISTA A/S.  
This drawing may not be reproduced, stored, or transmitted in any form by any means (electronic, mechanical, photocopying, recording or otherwise) without the prior written consent of DOVISTA A/S. This drawing is to be used only for the purposes specified by DOVISTA A/S and for no other purpose.  
We reserve all rights to change the product and product range without notice.

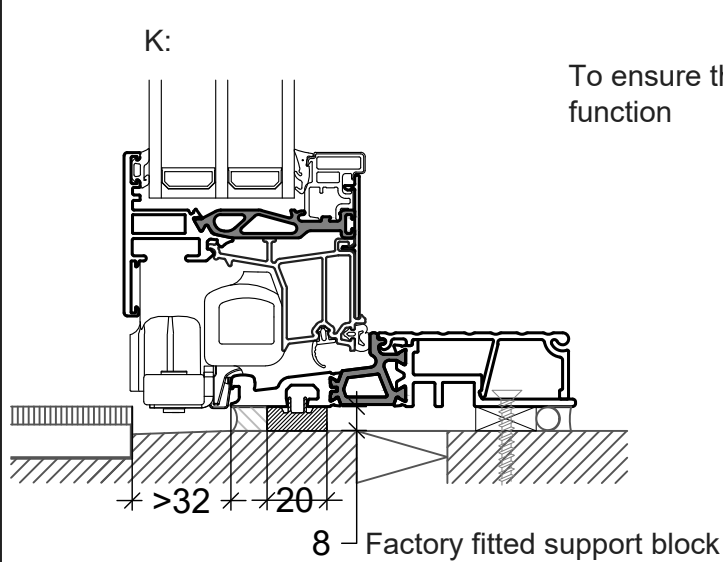


French casement (2-fløjet skydedør)

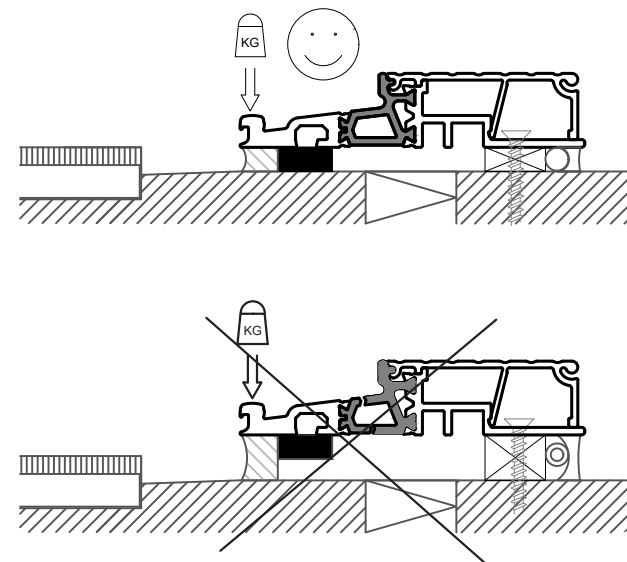
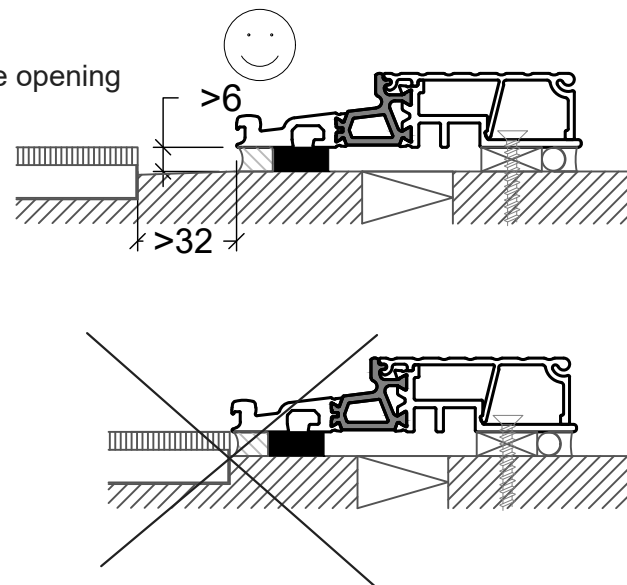
VELFAC 200 ENERGY, 1-leaf sliding casement door, 24mm threshold



## INSTALLATION TIP



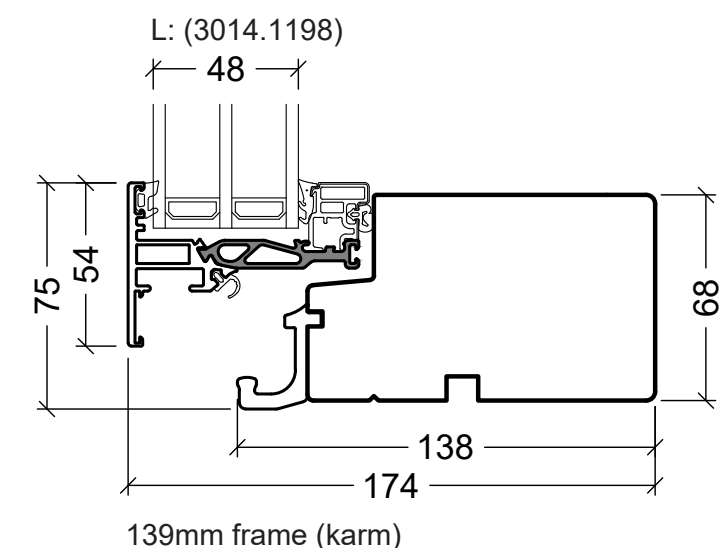
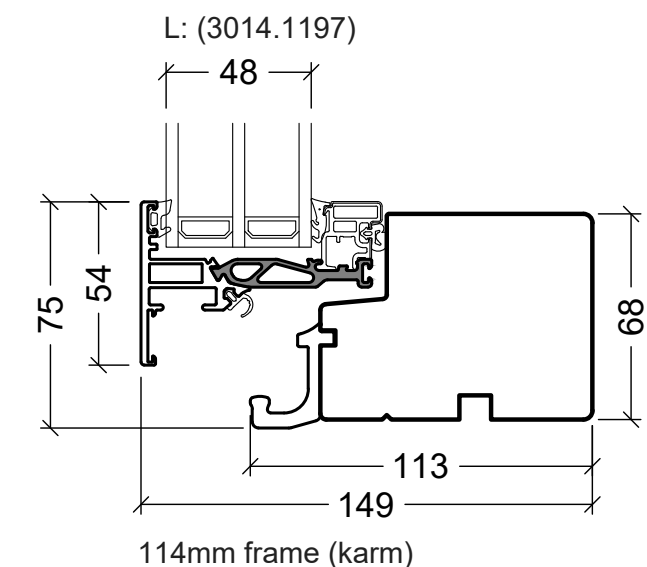
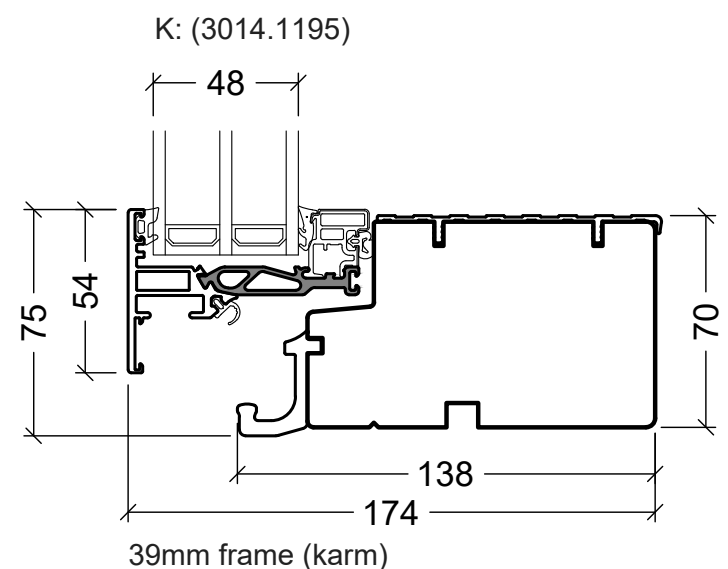
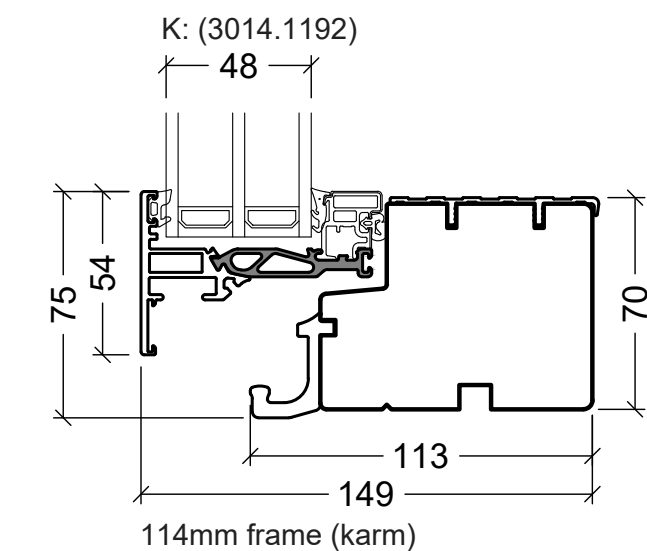
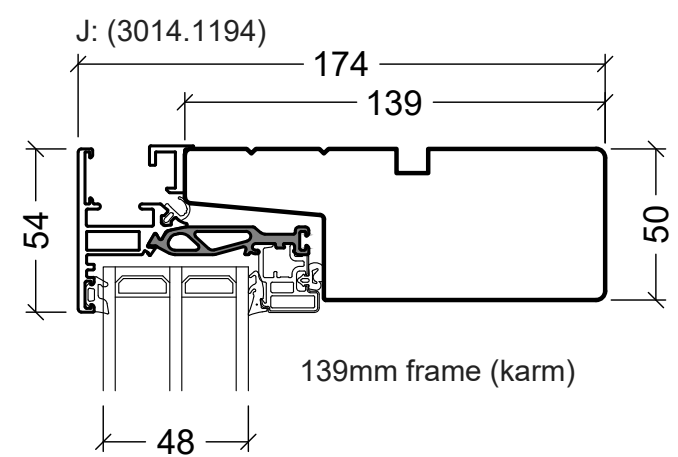
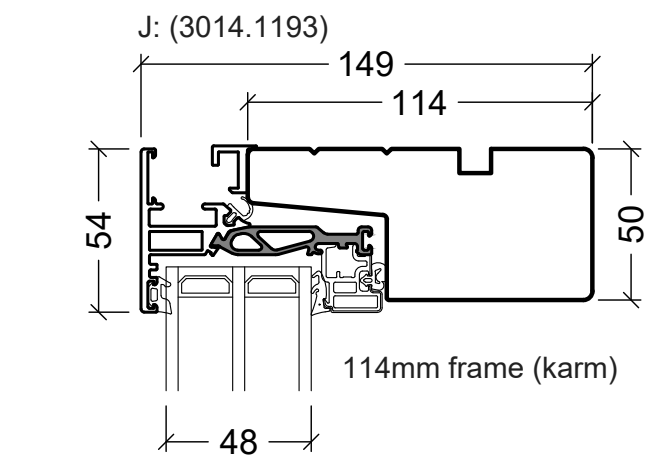
To ensure the opening function



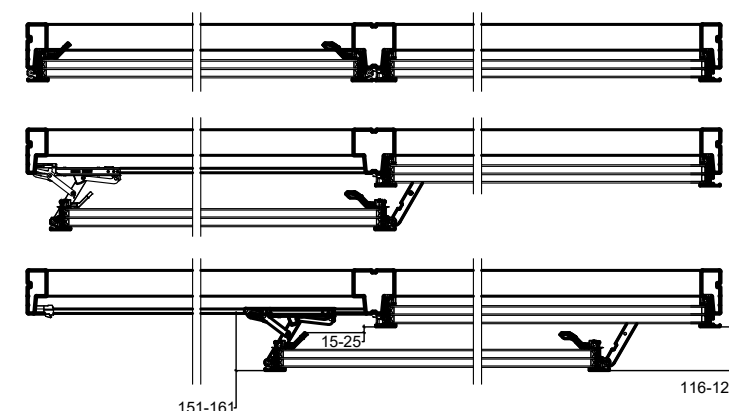
Ⓐ Ⓑ Ⓓ = as standard V200 Energy, see "Standard Details"

<b>VELFAC®</b> VELFAC is a trademark of DOVISTA A/S	System: VELFAC 200 Energy	Scale: 1:2,5 / 1:20 / 1:50
	English: Sliding casement door, 24mm threshold	Edition No. 09
	Dansk: Skydedør, 24mm bundkarm	01.21 © 2013, 2021

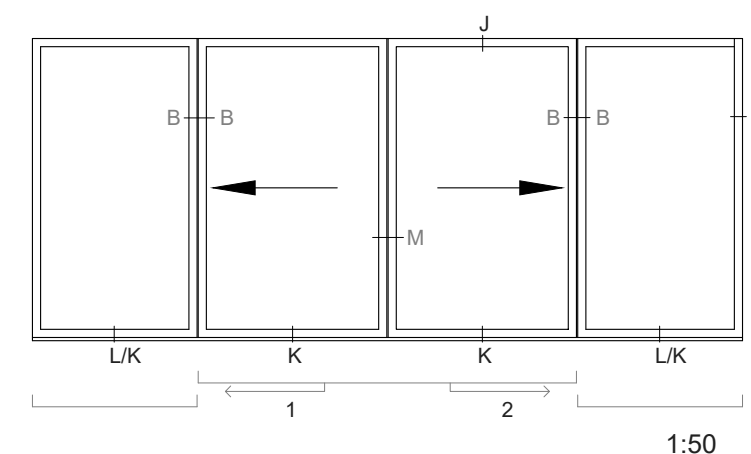
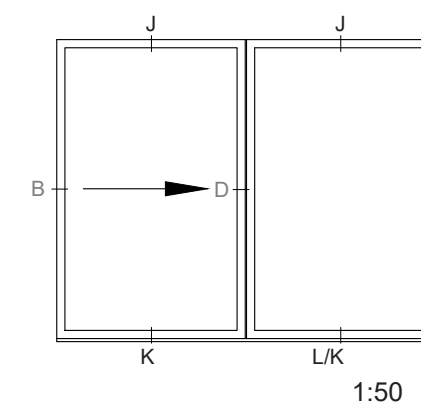
© DOVISTA A/S, CVR-no. 21147583. All intellectual property rights, copyright as well as all rights in know-how vest in DOVISTA A/S. This drawing may not be reproduced, stored, or transmitted in any form by any means (electronic, mechanical, photocopying, recording or otherwise) without the prior written consent of DOVISTA A/S. This drawing is to be used only for the purposes specified by DOVISTA A/S and for no other purpose. We reserve all rights to change the product and product range without notice.



VELFAC 200 ENERGY, sliding casement door, 70mm threshold



1:20



Ⓑ Ⓓ = as standard V200 Energy, see "Standard Details"

Ⓜ = see sliding casement door with 24mm threshold

**VELFAC®**

VELFAC is a trademark of DOVISTA A/S

System: VELFAC 200 Energy

English: Sliding casement door. 70mm threshold

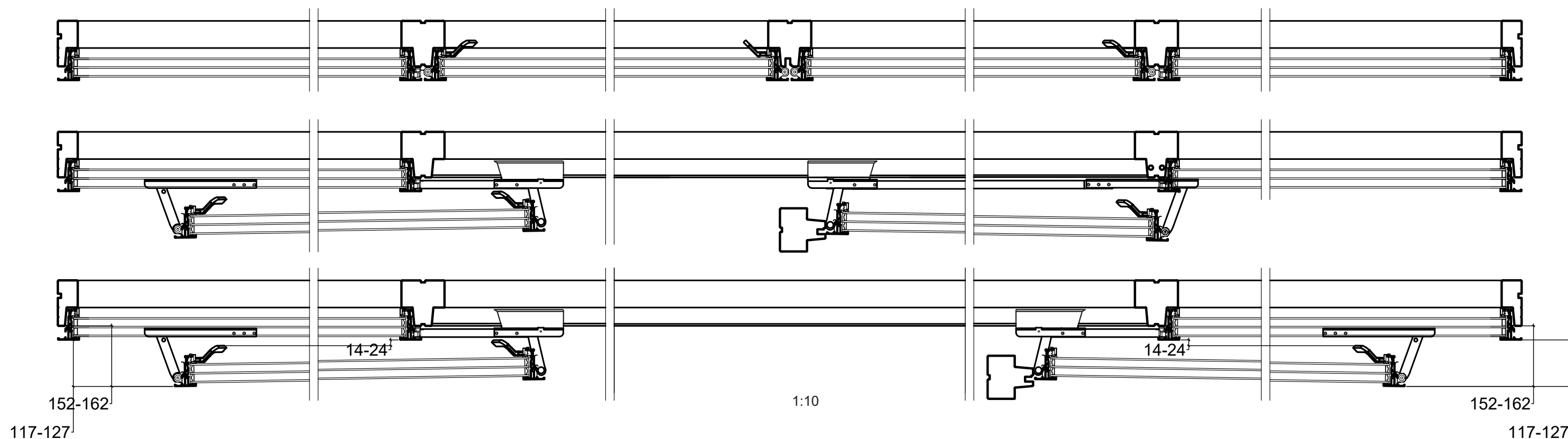
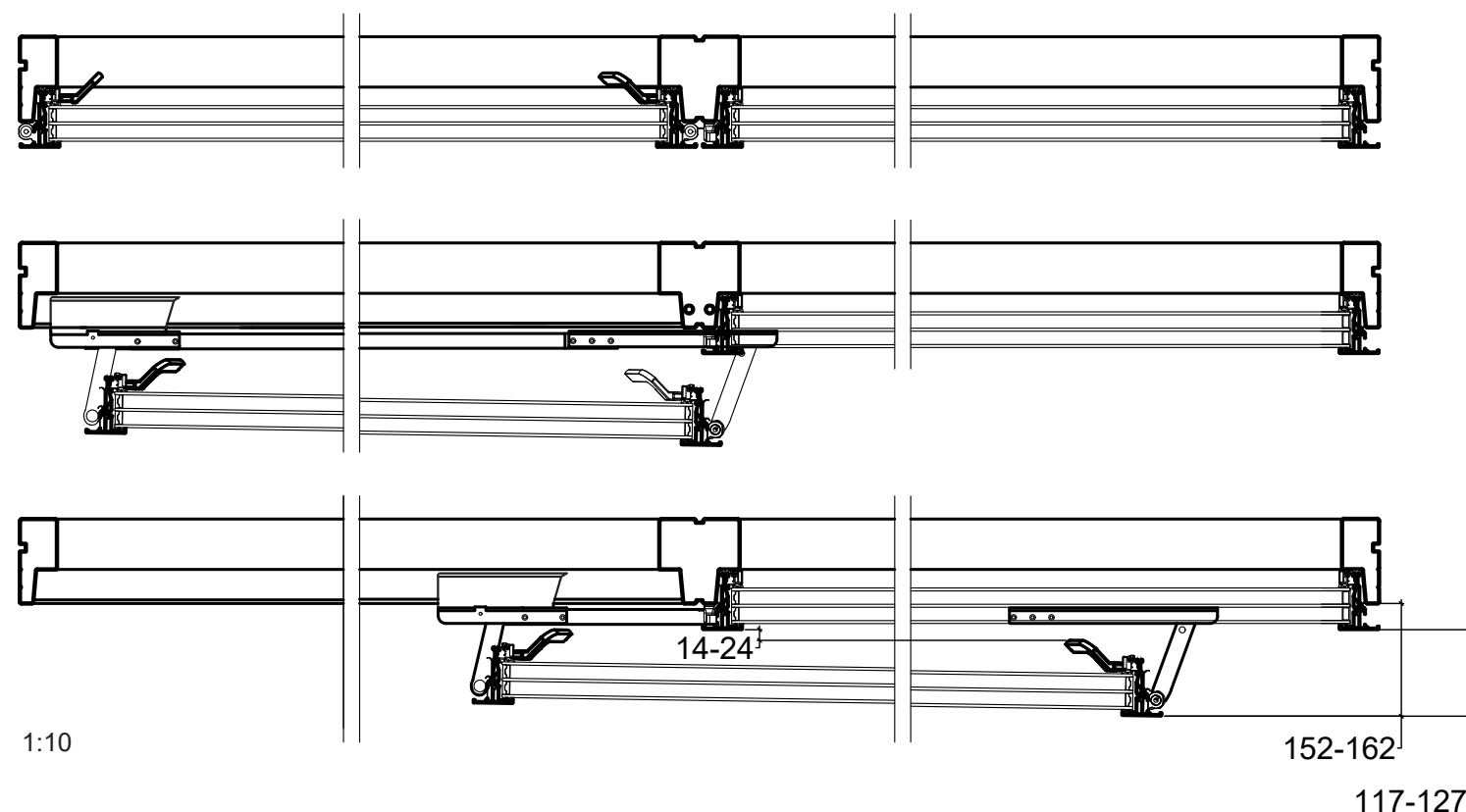
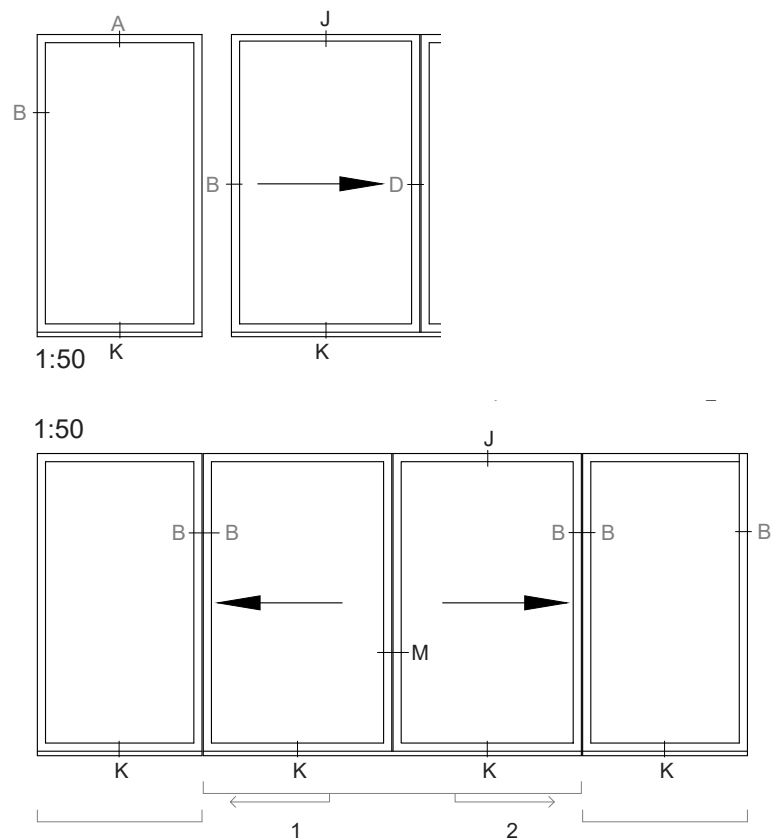
Dansk: Skydedør, 70mm bundkarm

Scale: 1:2,5 / 1:20 / 1:50

Edition No. 09

01.21 © 2013, 2021

© DOVISTA A/S, CVR-no. 21147583. All intellectual property rights, copyright as well as all rights in know-how vest in DOVISTA A/S. This drawing may not be reproduced, stored, or transmitted in any form by any means (electronic, mechanical, photocopying, recording or otherwise) without the prior written consent of DOVISTA A/S. This drawing is to be used only for the purposes specified by DOVISTA A/S and for no other purpose. We reserve all rights to change the product and product range without notice.



Ⓐ Ⓑ Ⓓ = as standard V200 Energy, see "Standard Details"

**VELFAC®**

VELFAC is a trademark of DOVISTA A/S

System: VELFAC 200 Energy

English: Sliding casement door, function

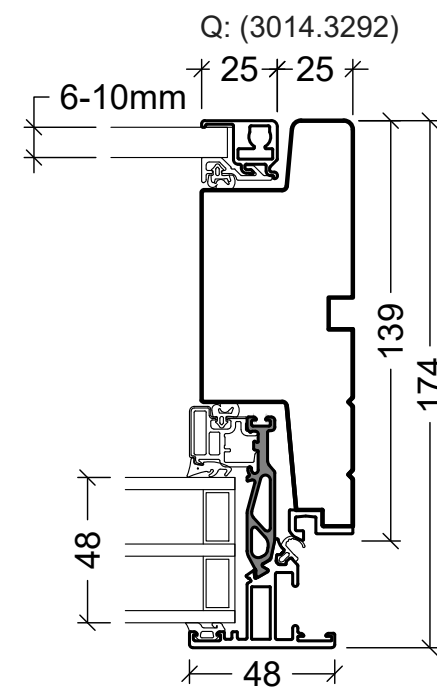
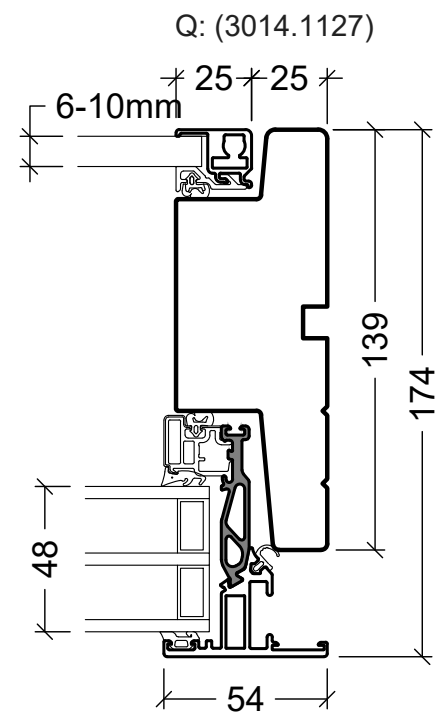
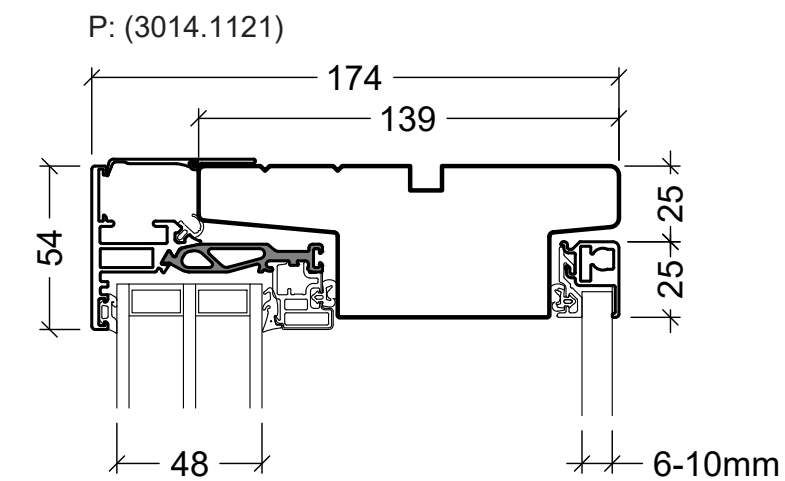
Dansk: Skydedør, funktion

Scale: 1:10 / 1:50

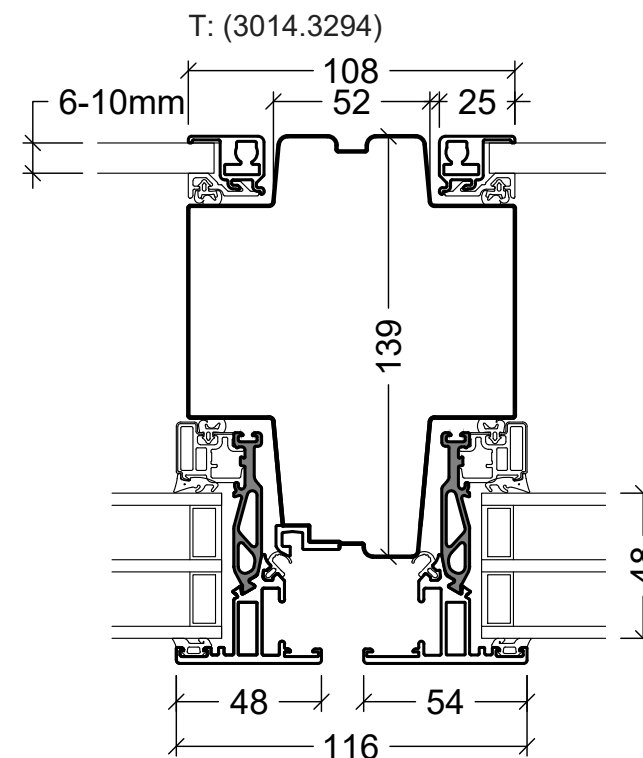
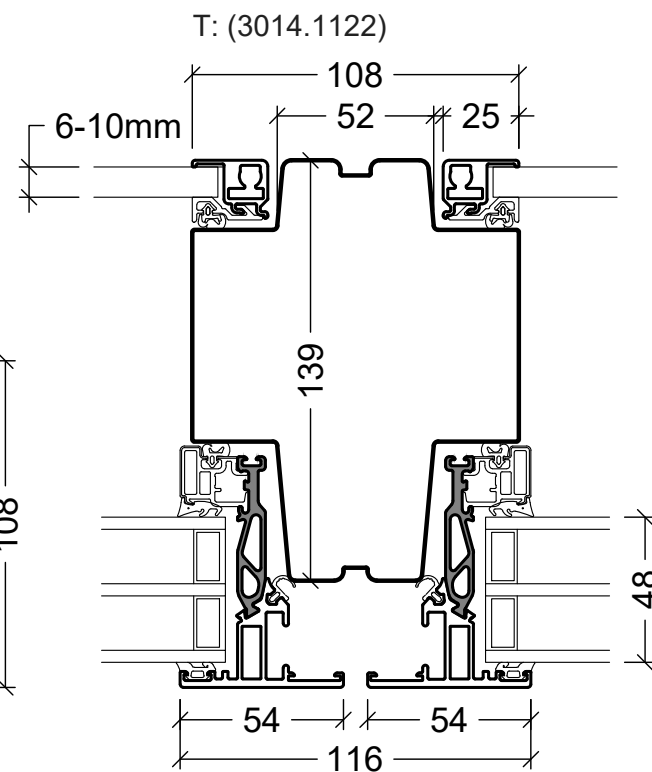
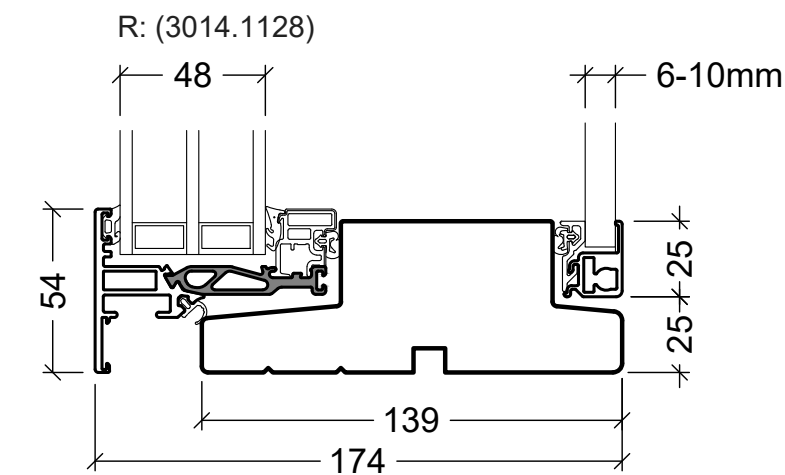
Edition No. 09

01.21 © 2013, 2021

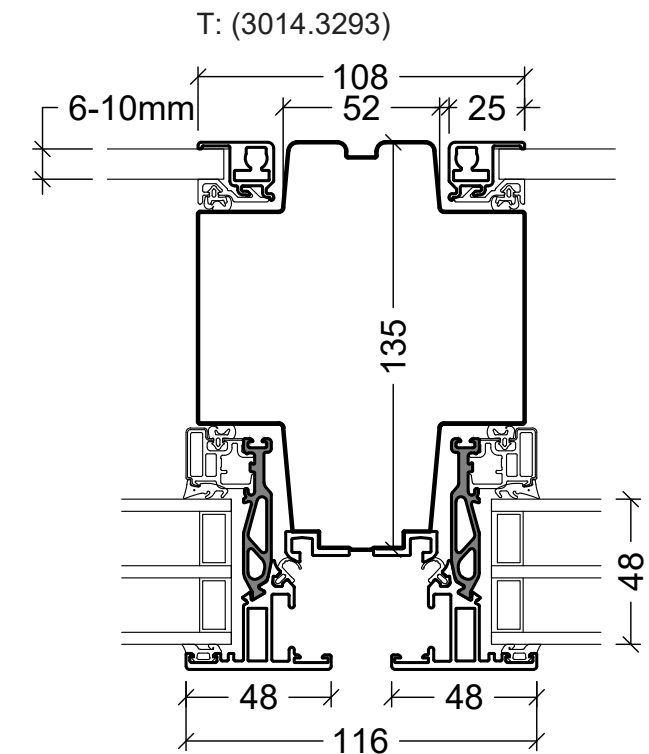
© DOVISTA A/S, CVR-no. 21147583. All intellectual property rights, copyright as well as all rights in know-how vest in DOVISTA A/S. This drawing may not be reproduced, stored, or transmitted in any form by any means (electronic, mechanical, photocopying, recording or otherwise) without the prior written consent of DOVISTA A/S. This drawing is to be used only for the purposes specified by DOVISTA A/S and for no other purpose. We reserve all rights to change the product and product range without notice.



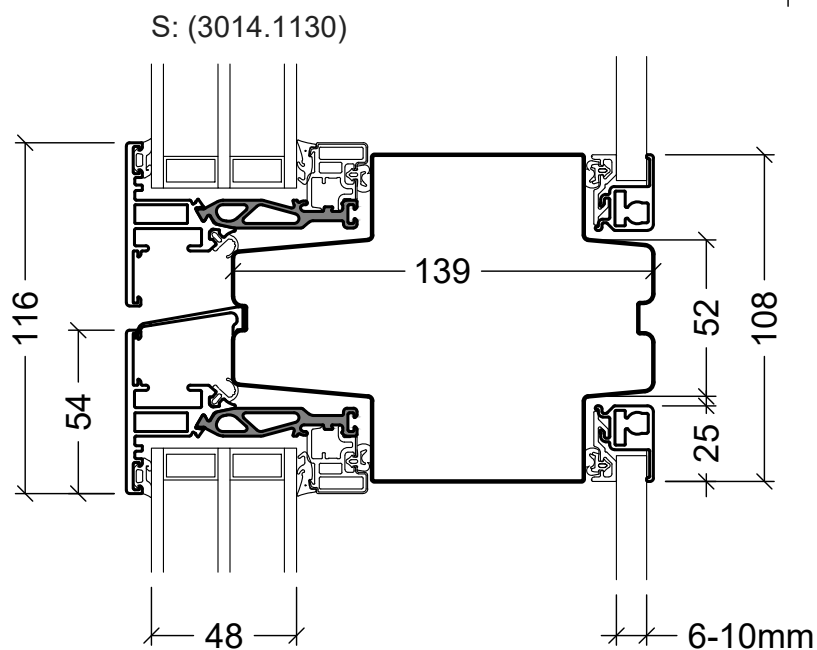
Only for reversible, 48mm sash



Reversible, 48mm sash / V200E



Reversible, 48mm sash



**VELFAC®**

VELFAC is a trademark of DOVISTA A/S

System: VELFAC 200 Energy

English: Internal sash

Dansk: Forsatsramme

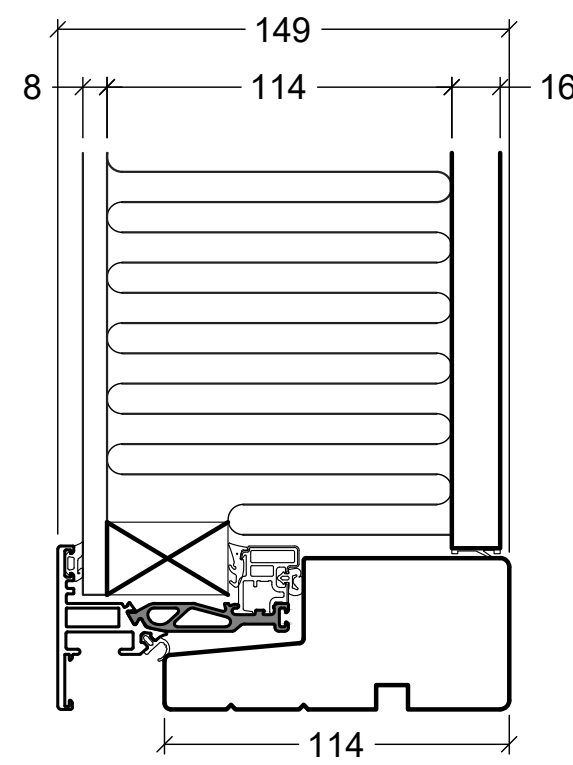
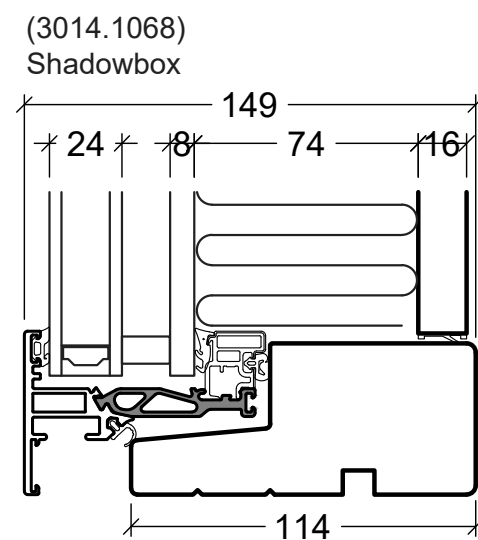
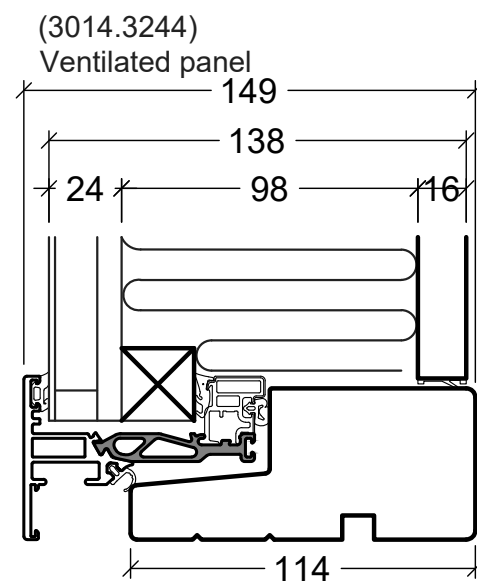
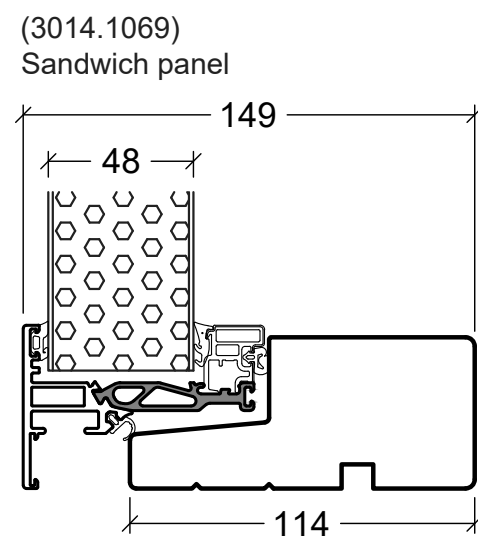
Scale: 1:2,5

Edition No. 09

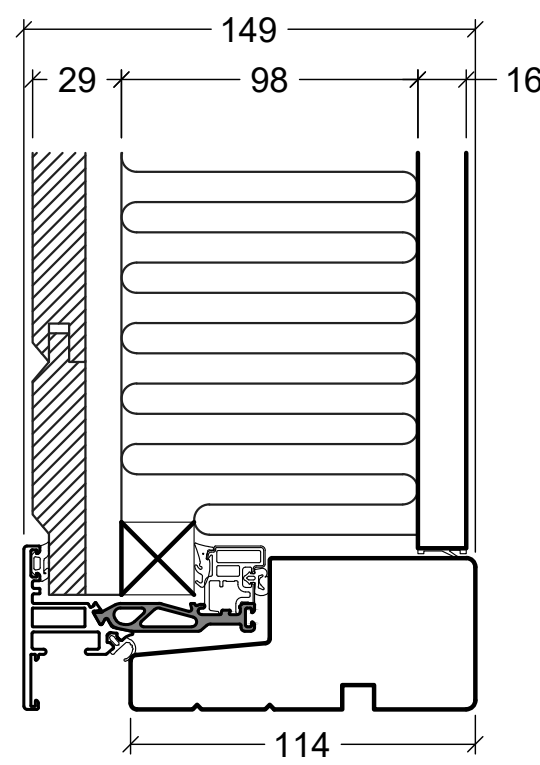
01.21 © 2013, 2021

© DOVISTA A/S, CVR-no. 21147583. All intellectual property rights, copyright as well as all rights in know-how vest in DOVISTA A/S. This drawing may not be reproduced, stored, or transmitted in any form by any means (electronic, mechanical, photocopying, recording or otherwise) without the prior written consent of DOVISTA A/S. This drawing is to be used only for the purposes specified by DOVISTA A/S and for no other purpose. We reserve all rights to change the product and product range without notice.

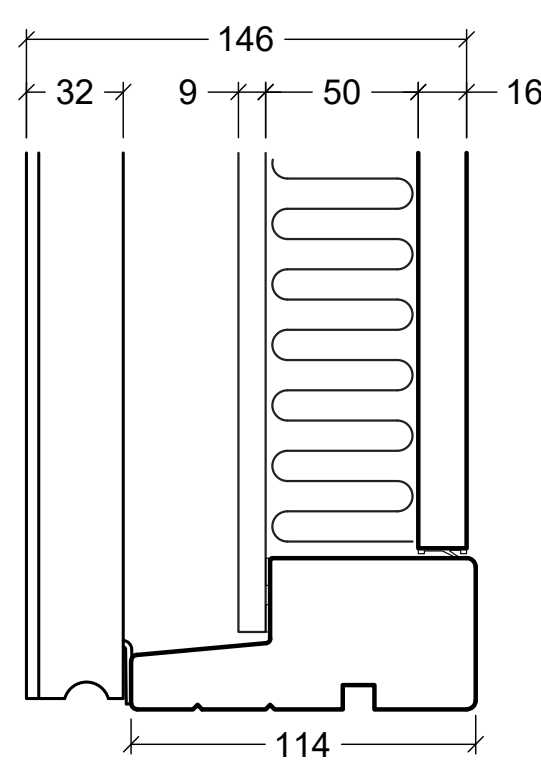




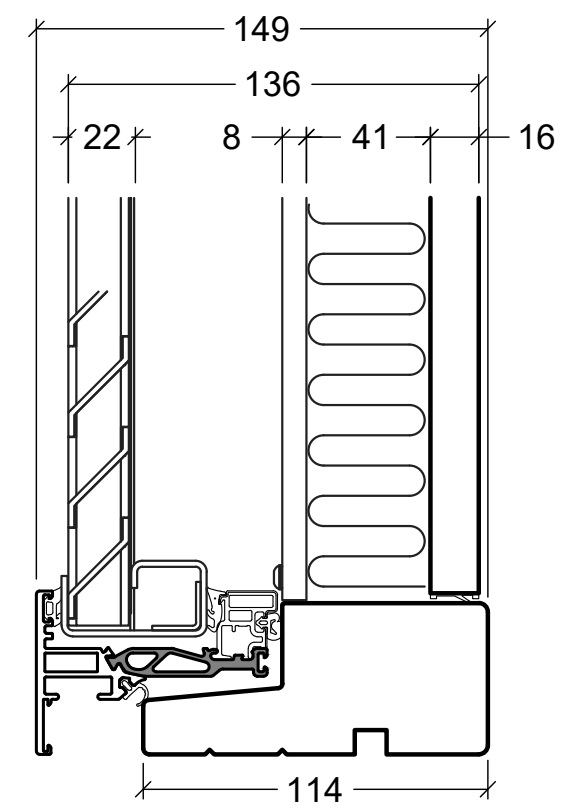
(3014.1081)  
Non ventilated panel




(3014.1079)  
Ceder panel

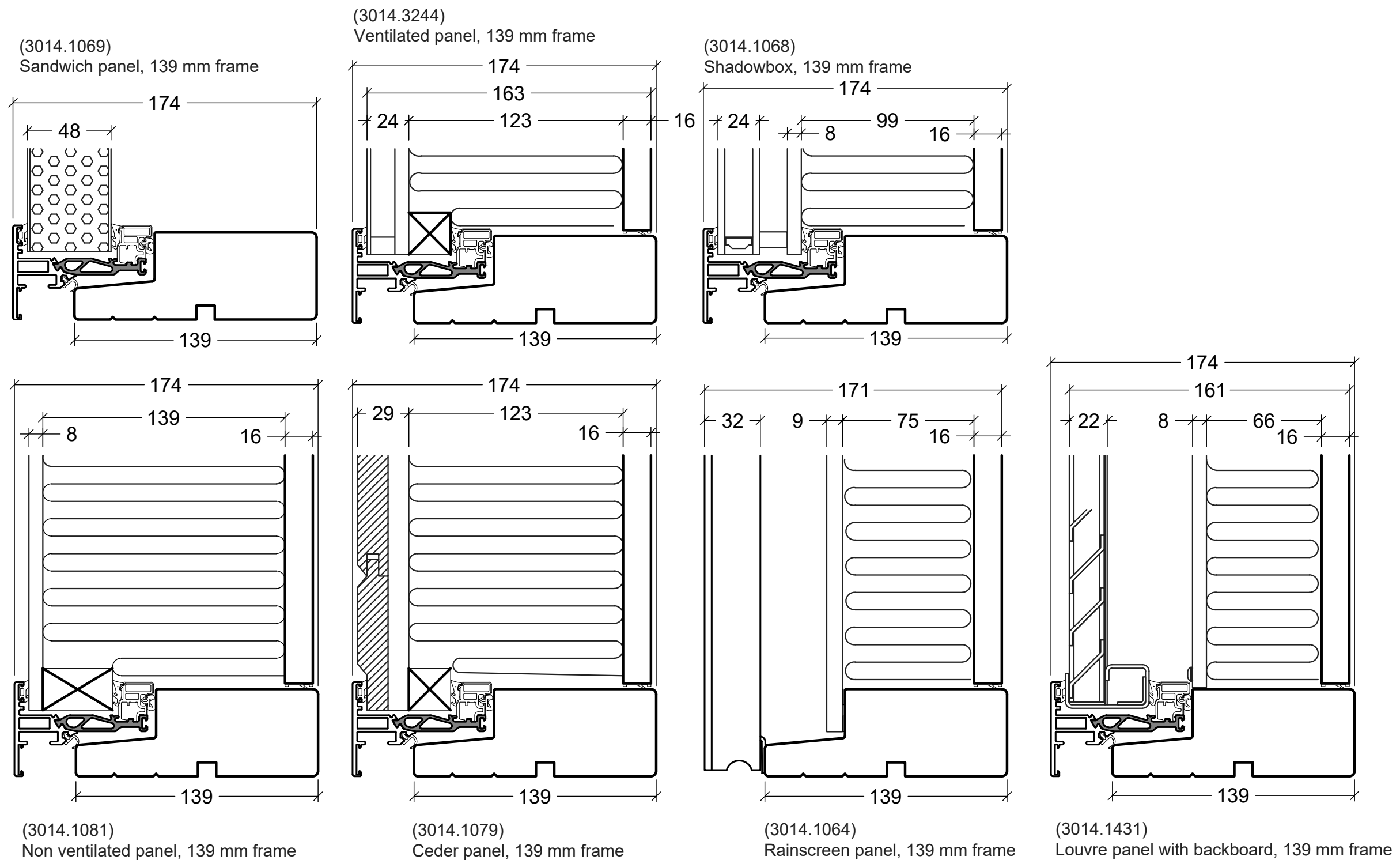


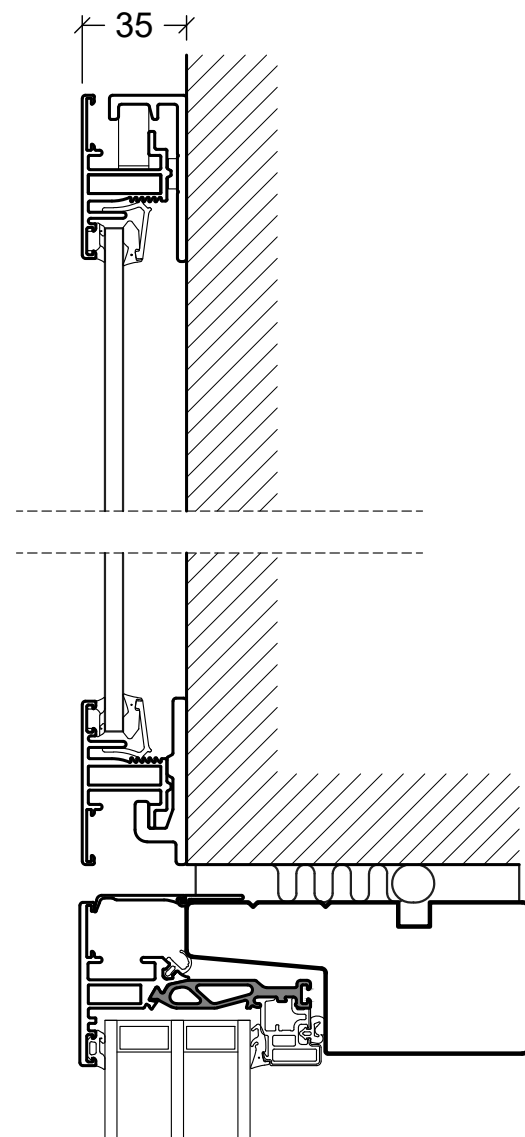
(3014.1064)  
Rainscreen panel



(3014.1431)  
Louvre panel with backboard

 VELFAC is a trademark of DOVISTA A/S	System: VELFAC 200 Energy	Scale: 1:2,5
	English: Panels, 114mm	Edition No. 09
	Dansk: Fyldninger, 114mm	01.21 © 2013, 2021
© DOVISTA A/S, CVR-no. 21147583. All intellectual property rights, copyright as well as all rights in know-how vest in DOVISTA A/S. This drawing may not be reproduced, stored, or transmitted in any form by any means (electronic, mechanical, photocopying, recording or otherwise) without the prior written consent of DOVISTA A/S. This drawing is to be used only for the purposes specified by DOVISTA A/S and for no other purpose. We reserve all rights to change the product and product range without notice.		





Facade panel (Facaderammer)

**VELFAC®**

VELFAC is a trademark of DOVISTA A/S

System: VELFAC 200 Energy

English: Facade panels

Dansk: Facaderammer

Scale: 1:2,5

Edition No. 09

01.21 © 2013, 2021

© DOVISTA A/S, CVR-no. 21147583. All intellectual property rights, copyright as well as all rights in know-how vest in DOVISTA A/S.  
This drawing may not be reproduced, stored, or transmitted in any form by any means (electronic, mechanical, photocopying, recording or otherwise) without the prior written consent of DOVISTA A/S. This drawing is to be used only for the purposes specified by DOVISTA A/S and for no other purpose.  
We reserve all rights to change the product and product range without notice.